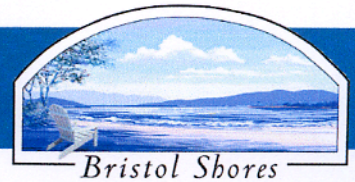
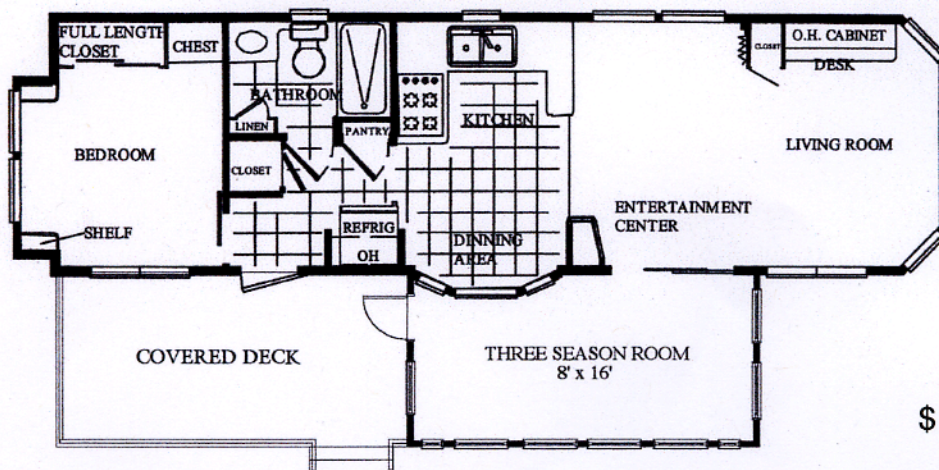


# Front Day Bed Plan



## In the Front Day Bed Model

additional trapezoid windows in your living room and bathroom skylight provide extra light, while a privacy-sliding panel turns your living room into a secluded second bedroom. Add to this your 3 season porch and you have room to sleep 6 or more! The open kitchen plan and second couch allow for easy and comfortable living space. Your fully furnished model features an interior decor that coordinates everything from your furniture to your curtains to the pillow shams in your bedroom. With the table, chairs, fully applianced kitchen, three season room and covered deck, all you need is a suitcase to enjoy your vacation getaway.



\$ \_\_\_\_\_